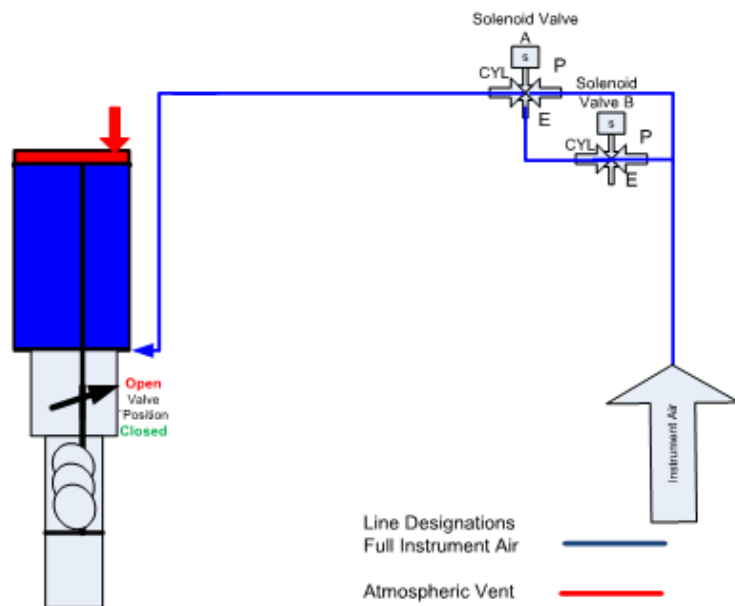


De-Energize or "Trip" to Close - Tripped



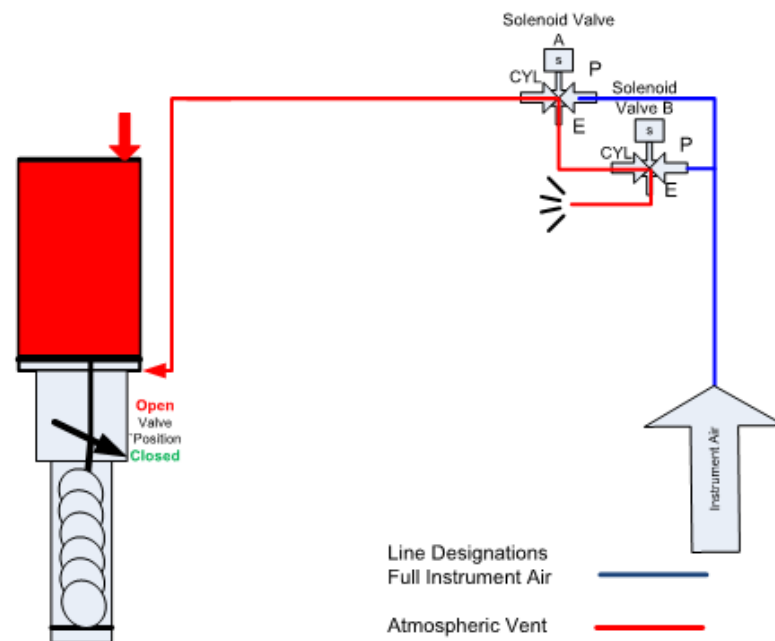
Normal Operating Condition with Valve Open

In this condition, both solenoid valves A & B are energized and port CYL of solenoid valve A is connected to the actuator cylinder. Port E of solenoid A is connected to port CYL of solenoid B. Port E of solenoid B is vented to atmosphere. Supply instrument air at header pressure to port P of solenoid A and port P of solenoid B pressures the actuator and the valve is Open.



Designed By: Scallon Controls, Inc.
 Chopper Valve Controls: chopper_normal.vsf

De-Energize or "Trip" to Close - Tripped



Normal Operating Condition with Valve "Tripped"

In this condition, both solenoid valves A & B are de-energized and port CYL of solenoid valve A is connected to the actuator cylinder. Port P of solenoid A is connected to port CYL of solenoid B. Port E of solenoid B is vented to atmosphere. Supplying instrument air at header pressure to port E of solenoid A and port P of solenoid B



Designed By: Scallon Controls, Inc.
 Chopper Valve Controls: chopper_normal.vsf